

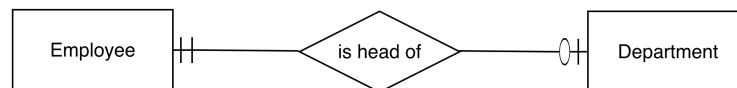
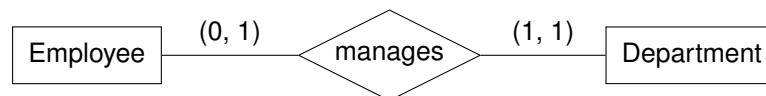
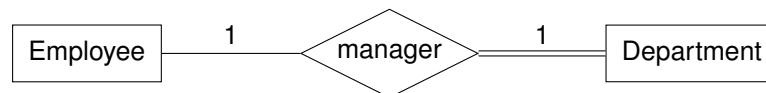
## Cardinality and participation in different notations

Our standard notation: “look across” for cardinality, “look here” for participation

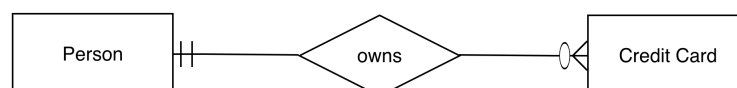
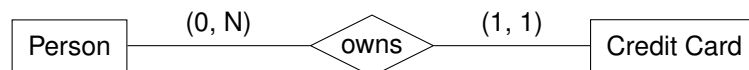
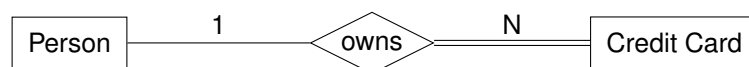
Min-max notation: “look here” for both cardinality and participation

Crow’s foot notation: “look across” for both cardinality and participation

1. Each department has exactly one manager. An employee might be a manager of maximum one department.



2. One person might own many credit cards, each credit card must have one owner.



3. A teacher might teach many courses this term, each course must have one or more teachers.

